

# Why Dual Enrollment Matters



Expanding college access and success for high school students



2.5 M  
Students  
Annually



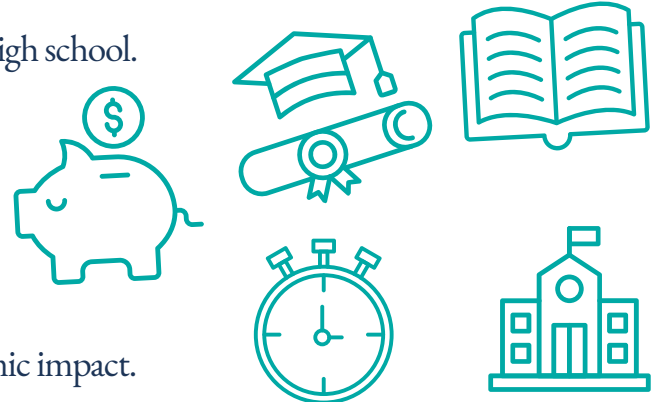
90% of Public  
High Schools  
Offer Courses



Higher  
Completion  
Rates

## ACADEMIC BENEFITS OF DUAL ENROLLMENT

- Students earn higher grades and are more likely to graduate from high school.
- Overall, dual enrollment students enter and complete college at higher rates.
- Dual enrollment students who enroll in college immediately after high school complete college degrees at higher rates.
- The more courses a student takes, the greater the long-term academic impact.



## STUDENT IMPACT & EXPERIENCE

For many students, dual enrollment makes college feel within reach

### How Students Benefit



**Confidence & Belonging:**  
Builds college identity and  
motivation



**Affordability & Head Start:**  
Saves families money and shortens  
time to degree



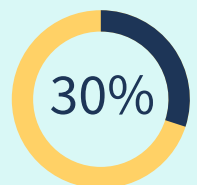
**Improved Success:**  
Students of all backgrounds  
perform better when given access

## ACCESS IS NOT UNIVERSAL



Economically disadvantaged  
and first-generation  
students have reduced access

Students in rural areas are  
less likely to have access



**Expanding Access = Expanding Opportunity**

# Creating Pathways to College: Lessons from California & Texas

State policy strategies that strengthen college access, equity, and completion

## Why Dual Enrollment Matters

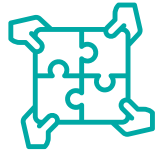
Dual enrollment allows high school students to earn college credit early which lowers costs, accelerates time to degree, and builds confidence in postsecondary success. California and Texas demonstrate how intentional policy design can expand access and improve outcomes at scale.

### How California Made Dual Enrollment Work

California embeds dual enrollment within a statewide equity and workforce strategy, prioritizing students historically underrepresented in higher education.

#### Strategies

**College & Career Access Pathways (CCAP):** K–12 and community colleges expand access statewide.



**Pathway Alignment:** Courses connect to transfer, certificates, and careers.



**Equity-First Design:** Focus on first-generation, low-income, Black, and Latino students.



**Policy & Funding Support:** State action sustains long-term college completion.



#### What This Means for Students?

- College feels possible earlier
- Clear pathways reduce excess credits
- Stronger transitions from high school to college



### Inside Texas' Dual Enrollment Success

Texas expanded dual enrollment (dual credit) by tying funding to student outcomes and removing cost barriers.

#### Strategies

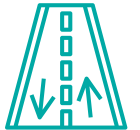
**Performance-Based Funding:** Colleges are rewarded when students complete 15+ dual credit hours.



**FAST Financial Aid:** Tuition and fees are covered for eligible low-income students.



**Structured Pathways:** Dual credit is embedded in degree and workforce programs.



**Required Student Supports:** Advising and agreements keep students on track.



#### What This Means for Students?

- Lower or No College Costs
- Earn Credit Faster in High School
- Earlier Progress Toward a Degree or Career Credential



### Questions to Guide Action

1. How is your state currently approaching dual enrollment and who is being left out?
2. What role could your state association or system play in shaping supportive policy and funding structures?
3. What shared goal would best serve both students and colleges?



Scan to view California and Texas' strategies.



See the research behind the results.